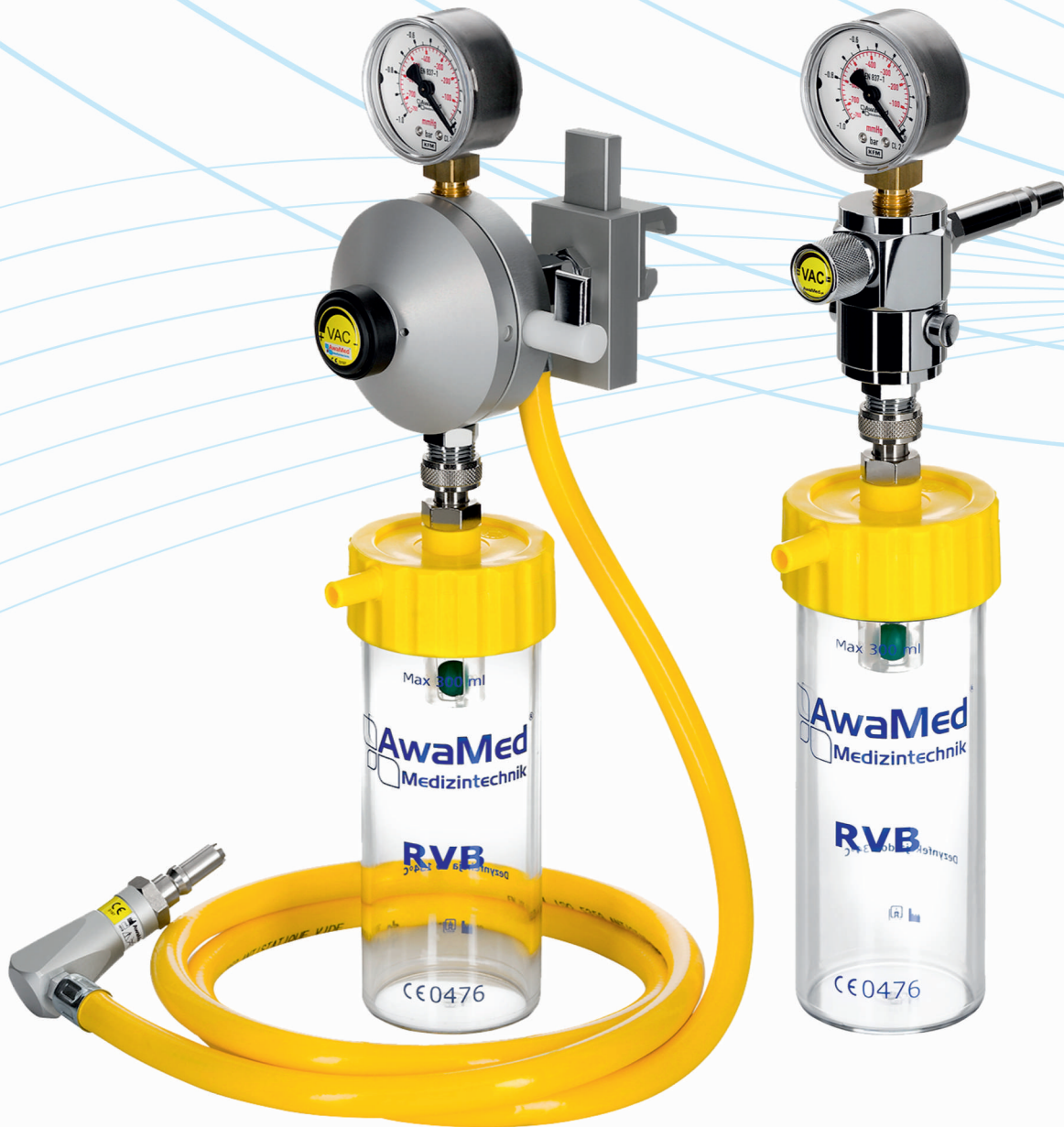


INJECTOR SUCTIONS • VACUUM DRAW VALVE  
SUCTION REGULATORS • SUCTION KITS • ACCESSORIES



 **AwaMed**<sup>®</sup>  
Medizintechnik

MEDICAL SUCTIONS



### **INSTALLATION**

Our goal is not only to supply the best product, but also to install it correctly and in compliance with all applicable standards. By combining these two services, we can provide the client with the best quality warranty for a product that fully meets high esthetic and functional expectations.



### **ADVICE**

Our consultants advise our clients on minor and major issues every day. They suggest which product to choose, which thread fits the dispenser, and how to connect the bed head unit to the systems. We answer every question related to our business, even when we are not involved in a project.



### **NEEDS ANALYSIS**

During a needs analysis, we examine what is necessary for proper functioning of medical gas systems in a hospital. We check for problems that prevent you from achieving what you need, and we identify possible solutions.



### **DESIGNING**

Our many years of experience allow us to prepare building and detailed designs along with solutions that have a real impact on the efficiency and quality of medical gas systems in hospitals.



### **WARRANTY**

All our products and services come with a 2-year warranty. When buying a product together with the service, the client is always sure of professional warranty service.



### **MAINTENANCE**

In order to enable hospitals to enjoy the convenience that comes with our products, we provide maintenance services. By performing periodic inspections, we ensure that the properties and quality of our products will not change with time.



### **CERTIFICATION**

We test and certify gas systems for compliance with applicable standards, including those concerning tightness, mechanical strength, cross connections, and system efficiency. As a result, hospitals can be sure that they buy high quality products.

# INJECTOR SUCTION

## FUNCTIONS AND APPLICATIONS

- › Measuring and continuously adjusting the suction vacuum with the knob.
- › High shock and drop resistance due to a brass cover - very high reliability,
- › Used in areas where the central vacuum system is missing,
- › A reducer can be connected and fixed directly to a compressed air cylinder.

## TECHNICAL SPECIFICATIONS

- › Vacuum adjustment range via a conical valve
- › Bottle of a safety container with a 300 ml capacity
- › Sterilisation temperature:
  - 134° C polycarbonate bottle
- › Brass cover (chrome plated),
- › Output 3/8" thread

## POWER SUPPLY

- › Compressed air min. 4 to max. 6 bar,
- › Optionally, oxygen upon customer's request.

## MAXIMUM SUCTION FLOW

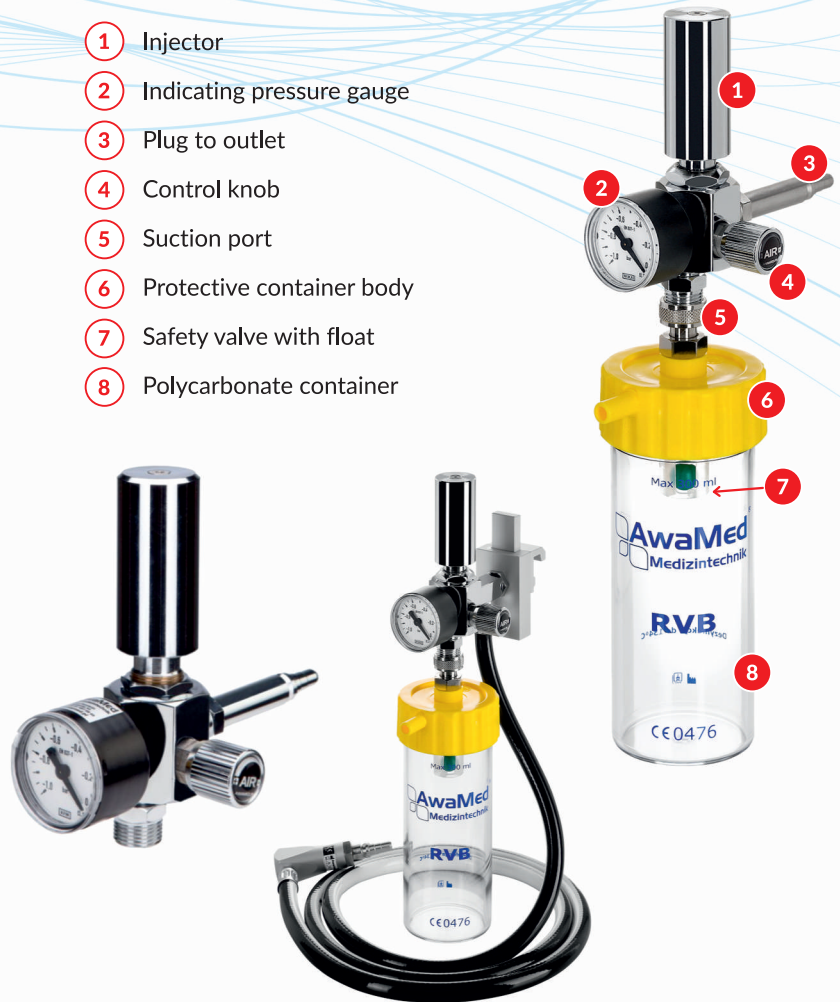
A suction device connected to the compressed air.

- › For a constant supply pressure of 5.0 bar, variable valve adjustment - 0.6 bar - 10 l/min.

## ASSEMBLY

- › The suction devices may be mounted to AGA, DIN,
- › Connection via high pressure reducer to compressed air cylinders.
- › Bracket suspension for MODURA/DIN medical rails.

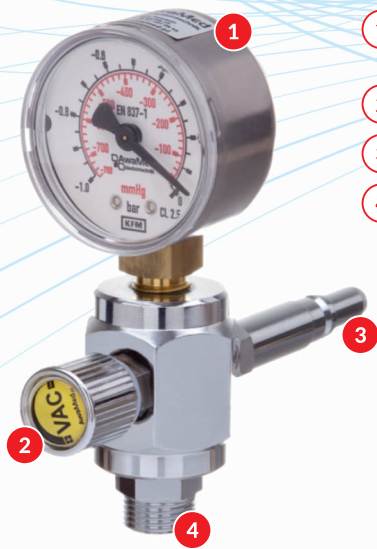
- 1 Injector
- 2 Indicating pressure gauge
- 3 Plug to outlet
- 4 Control knob
- 5 Suction port
- 6 Protective container body
- 7 Safety valve with float
- 8 Polycarbonate container



INJECTOR SUCTION	INDEKS
Suction device fitted to the AGA outlet (COMPRESSED AIR)	SI 02 01 07
Suction device fitted to the DIN outlet (COMPRESSED AIR)	SI 02 01 08
Suction device fitted to the AGA outlet (OXYGEN)	SI 02 01 13
Suction device fitted to the DIN outlet (OXYGEN)	SI 02 01 14
Suction device with a container fitted to the AGA outlet (COMPRESSED AIR)	SI 02 01 01
Suction device with a container fitted to the DIN outlet (COMPRESSED AIR)	SI 02 01 02
Suction device with a container fitted to the AGA outlet (OXYGEN)	SI 02 01 05
Suction device with a container fitted to the DIN outlet (OXYGEN)	SI 02 01 11
DIN/MODURA rail-mounted suction device with box, handle, hose and AGA plug (COMPRESSED AIR)	SI 02 02 13
DIN/MODURA rail-mounted suction device with box, handle, hose and DIN plug (COMPRESSED AIR)	SI 02 02 14
DIN/MODURA rail-mounted suction device with box, handle, hose and AGA plug (OXYGEN)	SI 02 02 16
DIN/MODURA rail-mounted suction device with box, handle, hose and DIN plug (OXYGEN)	SI 02 02 17



# VACUUM DRAW VALVE WITHOUT SHUT-OFF VALVE



- 1 Pressure gauge with indication
- 2 Control knob
- 3 Plug to outlet
- 4 Suction port

## MAXIMUM SUCTION FLOW

- › - 0.9 bar - 30 l/min

## POWER SUPPLY

- › - 0.4 bar to - 0.9 bar.

## FUNCTIONS AND APPLICATIONS

- › Measuring and continuously adjusting the suction vacuum with the knob.
- › High shock and drop resistance due to a brass housing - very high reliability.
- › Used in sites of frequent procedures (ICU).

## TECHNICAL SPECIFICATIONS

- › Suction control with the knob from 0 to 0.9 bar,
- › The vacuum regulation range via the conical valve,
- › Connection to a central vacuum,
- › Fixing either directly to a point or to a DIN/MODURA rail,
- › The possibility of connecting a safety cylinder,
- › 3/8" thread output,
- › The possibility of attaching secretion containers,
- › Possibility of connecting a sleeve with a nut for direct fitting of the hoses,
- › 300 ml safety bottle,
- › Sterilisation temperature:
  - • 134°C polycarbonate bottle
- › Brass cover (chrome plated).

VACUUM DRAW VALVE WITHOUT CONTAINER	INDEKS
Vacuum draw valve mounted directly to the AGA outlet	ZCP 01 01 01
Vacuum draw valve mounted directly to the DIN outlet	ZCP 01 01 02
Vacuum draw valve mounted to DIN/MODURA rail with handle, hose and AGA plug	ZCP 01 03 01
Vacuum draw valve mounted to DIN/MODURA rail with handle, hose and DIN plug	ZCP 01 03 02



VACUUM DRAW VALVE WITH CONTAINER	INDEKS
Vacuum draw valve mounted directly to the AGA outlet with a container	ZCP 02 01 01
Vacuum draw valve mounted directly to the DIN outlet with a container	ZCP 02 01 02
Vacuum draw valve mounted to DIN/MODURA rail with handle, hose and AGA plug	ZCP 02 02 20
Vacuum draw valve mounted to DIN/MODURA rail with handle, hose and DIN plug	ZCP 02 02 21



# VACUUM DRAW VALVE WITH SHUT-OFF VALVE



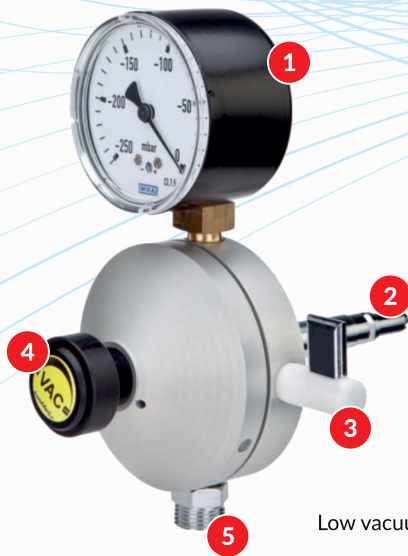
- 1 Pressure gauge with indication
- 2 Control knob
- 3 Plug to outlet
- 4 Suction port
- 5 Shut-off valve



VACUUM DRAW VALVE WITH SHUT-OFF VALVE WITHOUT CONTAINER	INDEKS
Vacuum draw valve mounted directly on the AGA point	ZCP 03 01 01
Vacuum draw valve mounted directly on the DIN point	ZCP 03 03 01
Vacuum draw valve mounted to DIN/MODURA rail with handle, hose and AGA plug	ZCP 03 04 01
Vacuum draw valve mounted to DIN/MODURA rail with handle, hose and DIN plug	ZCP 03 04 02

VACUUM PRESSURE SENSOR WITH SHUT-OFF VALVE AND CONTAINER	INDEKS
Vacuum draw valve mounted directly on the AGA point with a protective container	ZCP 04 01 01
Vacuum draw valve mounted directly on the DIN point with a protective container	ZCP 04 01 02
Vacuum draw valve mounted directly on the DIN/MODURA rail with safety box handle, hose and AGA plug	ZCP 04 02 01
Vacuum draw valve mounted directly on the DIN/MODURA rail with safety box handle, hose and DIN plug	ZCP 04 02 02

# MEMBRANE SUCTION REGULATOR



Low vacuum MRS AWA 250

- ① Pressure gauge with indication
- ② Plug to outlet
- ③ Switch-on valve
- ④ Control knob
- ⑤ 3/8" thread suction connection



High vacuum MRS AWA 1000

## PROPERTIES

- › Vacuum regulation range via the internal membrane
  - 0 to -250 mbar (RSN versions - low vacuum)
  - 0 to -1 bar (RSW versions - high vacuum)
- › 300 ml safety bottle,
- › Sterilisation temperature: 134°C polycarbonate bottle,
- › Aluminium cover,
- › Vacuum supply from -0.4 to -0.9 bar,
- › The shut-off valve,
- › 3/8" thread.

## ASSEMBLY

Suctions can be mounted to AGA, DIN outlet.  
For MODURA/DIN medical rails with clamp holders.  
Possibility of connecting a sleeve with a nut for direct fitting of the hoses.

## FUNCTIONS AND APPLICATIONS

- › Measuring and continuously adjusting the suction vacuum using the knob,
- › High shock and drop resistance due to aluminium housing, often used in difficult conditions (ambulances, ceiling supply pendants, neonatal units),
- › RSN versions are especially recommended when working in areas where low vacuum pressure is required with the possibility of very fine adjustment (e.g. neonatal).

## MAXIMUM SUCTION FLOW

- › Low vacuum membrane suction regulator  
- 250 mbar - 7.0 l/min
- › High vacuum membrane suction regulator  
- 0.9 bar - 40 l/min

MEMBRANE SUCTION REGULATOR WITHOUT CONTAINER TO POINT	INDEKS
Mounted on AGA outlet - low vacuum	RSN 01 01 01
Mounted on DIN outlet - low vacuum	RSN 01 01 02
Mounted on AGA outlet - high vacuum	RSW 01 01 01
Mounted on DIN outlet - high vacuum	RSW 01 01 02

MEMBRANE SUCTION REGULATOR WITHOUT RAIL CONTAINER	INDEKS
Mounted on DIN/MODURA rail with handle, hose and AGA plug - low vacuum	RSN 01 02 10
Mounted on DIN/MODURA rail with handle, hose and DIN plug - low vacuum	RSN 01 02 11
Mounted on DIN/MODURA rail with handle, hose and AGA plug - high vacuum	RSW 01 02 11
Mounted on DIN/MODURA rail with handle, hose and DIN plug - high vacuum	RSW 01 02 12

# MEMBRANE SUCTION REGULATOR



Low vacuum MRS AWA 250

High vacuum MRS AWA 1000

MEMBRANE SUCTION REGULATOR WITH CONTAINER TO POINT	INDEKS
Mounted on VAC AGA outlet - low vacuum	RSN 02 01 01
Mounted on VAC DIN outlet - low vacuum	RSN 02 01 02
Mounted on VAC AGA outlet - high vacuum	RSW 02 01 01
Mounted on VAC DIN outlet - high vacuum	RSW 02 01 02

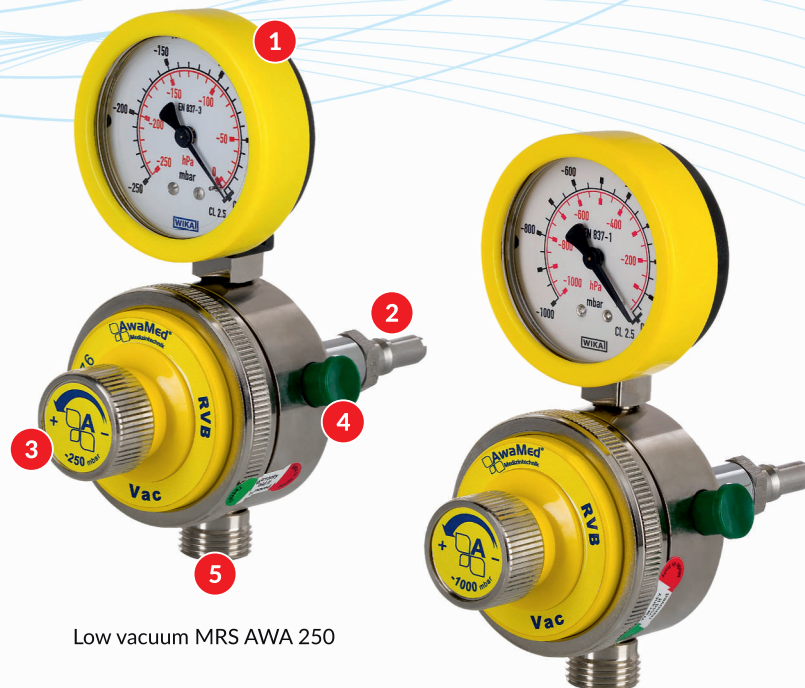
MEMBRANE SUCTION REGULATOR WITH RAIL CONTAINER	INDEKS
Mounted on DIN/MODURA rail with handle, hose and AGA plug - low vacuum	RSN 02 02 08
Mounted on DIN/MODURA rail with handle, hose and DIN plug - low vacuum	RSN 02 02 09
Mounted on DIN/MODURA rail with handle, hose and AGA plug - high vacuum	RSW 02 02 13
Mounted on DIN/MODURA rail with handle, hose and DIN plug - high vacuum	RSW 02 02 14



# MEMBRANE SUCTION REGULATOR

## PROPERTIES

- › Vacuum regulation range via the internal membrane
  - 0 to -250 mbar (RSN versions - low vacuum)
  - 0 to -1 bar (RSW versions - high vacuum)
- › Maximum suction flow 52 l/min (RSN) 80 l/min (RSW)
- › Protective container bottle of 300 ml or 150 ml capacity,
- › Sterilisation temperature: 134°C polycarbonate bottle,
- › Vacuum supply from -0 to -1 bar,
- › The shut-off valve.



Low vacuum MRS AWA 250

High vacuum MRS AWA 1000

- 1 Pressure gauge with indication
- 2 Plug to outlet
- 3 Control knob
- 4 Switch-on/off valve
- 5 1/2" thread suction connection

AWA 250 W MEMBRANE SUCTION REGULATOR WITHOUT A CONTAINER	INDEKS
AWA 250 W membrane suction regulator mounted at AGA - low vacuum	RSNB 01 00 01
AWA 250 W membrane suction regulator mounted at DIN - low vacuum	RSNB 01 00 02
AWA 250 W membrane suction regulator for DIN/MODURA rail with handle and AGA angle plug - low vacuum	RSNB 01 00 01 15
AWA 250 W membrane suction regulator for DIN/MODURA rail with handle and DIN angle plug - low vacuum	RSNB 01 00 02 15

AWA 1000 W MEMBRANE SUCTION REGULATOR WITHOUT A CONTAINER	INDEKS
AWA 1000 W membrane suction regulator mounted at AGA - high vacuum	RSWB 01 00 01
AWA 1000 W membrane suction regulator mounted at DIN - high vacuum	RSWB 01 00 02
AWA 1000 W membrane suction regulator for DIN/MODURA rail with handle and AGA angle plug - high vacuum	RSWB 01 00 01 15
AWA 1000 W membrane suction regulator for DIN/MODURA rail with handle and DIN angle plug - high vacuum	RSWB 01 00 02 15

# MEMBRANE SUCTION REGULATOR



Low vacuum MRS AWA 250

High vacuum MRS AWA 1000

AWA 250 W MEMBRANE SUCTION REGULATOR WITH 300 ML CONTAINER	INDEKS
AWA 250 W membrane suction regulator mounted on AGA with a container - low vacuum	RSNB 02 01 01
AWA 250 W membrane suction regulator mounted on DIN with a container - low vacuum	RSNB 02 01 02
AWA 1000 W membrane suction regulator for DIN/MODURA rail with handle, hose and right angle plug AGA with box - low vacuum	RSNB 02 02 01 15
AWA 1000 W membrane suction regulator for DIN/MODURA rail with handle, hose and right angle plug DIN with box - low vacuum	RSNB 02 02 02 15

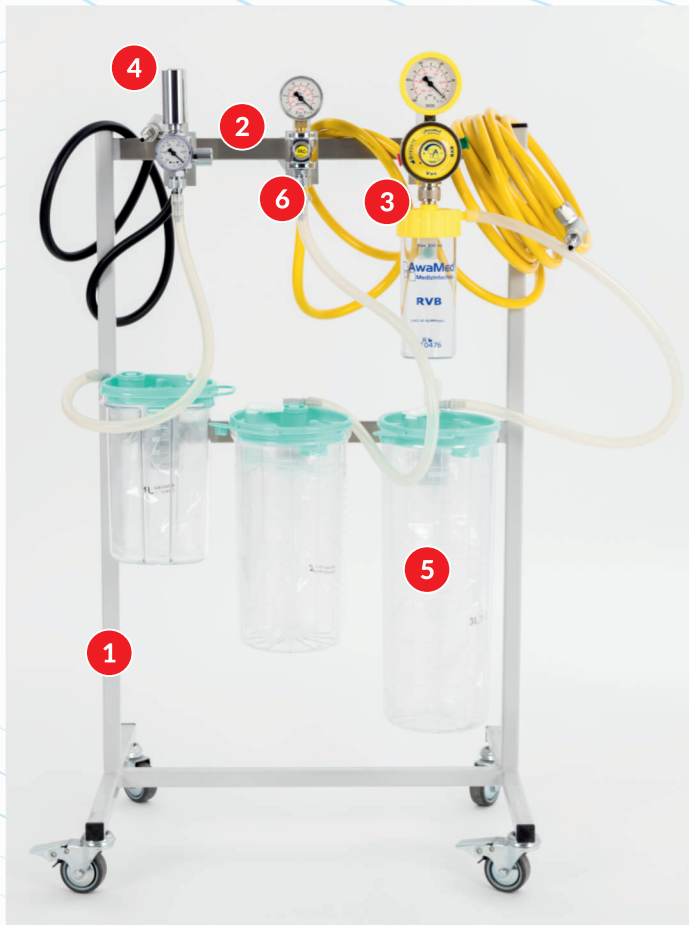
AWA 1000 W MEMBRANE SUCTION REGULATOR WITH 300 ML CONTAINER	INDEKS
AWA 1000 W membrane suction regulator mounted on AGA with a container - high vacuum	RSWB 02 01 01
AWA 1000 W membrane suction regulator mounted on DIN with a container - high vacuum	RSWB 02 01 02
AWA 1000 W membrane suction regulator for DIN/MODURA rail with handle, hose and right angle plug AGA with container - high vacuum	RSWB 02 02 01 15
AWA 1000 W membrane suction regulator for DIN/MODURA rail with handle, hose and right angle plug DIN with container - high vacuum	RSWB 02 02 02 15

# SUCTION KIT

CUSTOMER CAN CONFIGURE IT INDIVIDUALLY

Portable AwaMed suction kits are ideally suited to your needs. The customer specifies the quantity and type of suction and the type and quantity of the containers for the secretions.

The assortment set on the trolley allows the full range of suction and containers to move freely into the secretion without the risk of damage to the equipment or accidental tipping of the safety containers.



SUCTION KIT	INDEKS
trolley	STV 01 08 00

## SUCTION KIT

- ① Trolley
- ② DIN medical rail
- ③ Membrane suction regulator
- ④ Injector suction
- ⑤ Container for the secretions with disposable inserts and secretion drainage drains
- ⑥ Vacuum Draw Valve

# ACCESSORIES



PROTECTIVE CONTAINER	INDEKS
Protective container with shut-off valve 300ml, 1/2" connection	PZP 01 00 08
Protective container with shut-off valve 150ml, 1/2" connection	PZP 01 00 09
Protective container with shut-off valve 300ml, 3/8" connection	PZP 01 00 08 A
Protective container with shut-off valve 150ml, 3/8" connection	PZP 01 00 09 A



SERRES CONTAINERS	INDEKS
SERRES 1l container	STV 01 02 07
SERRES 2l container	STV 01 02 04
SERRES 3l container	STV 01 02 08

CARTRIDGE FOR SERRES CONTAINER	INDEKS
Cartridge 1l	STV 01 02 06
Cartridge 2l	STV 01 05 03
Cartridge 3l	STV 01 02 05

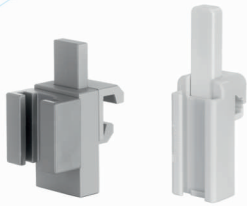


# ACCESSORIES



FLOVAC CONTAINERS	INDEKS
FLOVAC 1l container	STV 06 01 01
FLOVAC 2l container	STV 06 01 02
FLOVAC 3l container	STV 06 01 03

CARTRIDGE FOR FLOVAC BOX	INDEKS
1l container	STV 06 02 01
2l container	STV 06 02 02
3l container	STV 06 02 03



SERRES BOX HOLDER	INDEKS
SERRES/float box holder for DIN rail/MODURA (metal)	STV 06 00 10
SERRES/float box holder for DIN rail/MODURA (plastic)	UPSE 01 01 01

FLOVAC BOX HOLDER	INDEKS
ABS ring supporting the FLOVAC container	STV 06 00 10



BUSHING WITH NUT FOR VACUUM REGULATORS	INDEKS
Bushing with nut G 3/8"	TN 01 02 00
Bushing with nut G 1/2"	TN 01 02 00 00



FILTRES	INDEKS
Anti-bacterial filter for medical suction	FDS 01 01 01
Anti-bacterial filter for AWA medical suction	FDS 01 01 02

HOSES*	INDEKS
Medical gas hose - yellow [VACUUM]	WAZ 01 03 00
Medical gas hose - black [COMPRESSED AIR]	WAZ 01 02 00
Medical gas hose - blue [NITROGEN OXIDE]	WAZ 01 01 00
Medical gas hose - white [OXYGEN]	WAZ 01 04 00

\*hose dimensions fi internal 6.3 mm (+/- 0.3 mm),  
external fi 12.4 mm (+/- 0.3 mm)"



VACUUM

NITROGEN OXIDE

COMPRESSED AIR

OXYGEN



SILICONE TUBING	INDEKS
Silicone hose fi 12x2.5 for suction	WAZ 00 00 02

## WE ALSO PRODUCE

- MEDICAL CEILING SUPPLY PENDANTS
- MEDICAL CEILING SUPPLY BEAMS
- MEDICAL BED HEAD UNITS
- AREA VALVE SERVICE UNIT (AVSU)
- FLOWMETERS
- MEDICAL SUCTIONS
- GAS OUTLETS
- PLUGS
- ADAPTERS
- GAS FITTINGS
- MANIFOLDS



© AwaMed - Medizintechnik  
second edition

**20 YEARS**  
of experience

**200**  
products

AwaMed - Medizintechnik Arkadiusz Warzyński  
ul. Zeusa 1 • 72-006 Mierzyn • [www.awamed.pl](http://www.awamed.pl)

 [awamed@awamed.pl](mailto:awamed@awamed.pl)  tel. +48 91 48 76 849

